

CERTIFICATE OF LOCATION OF GOVERNMENT CORNER

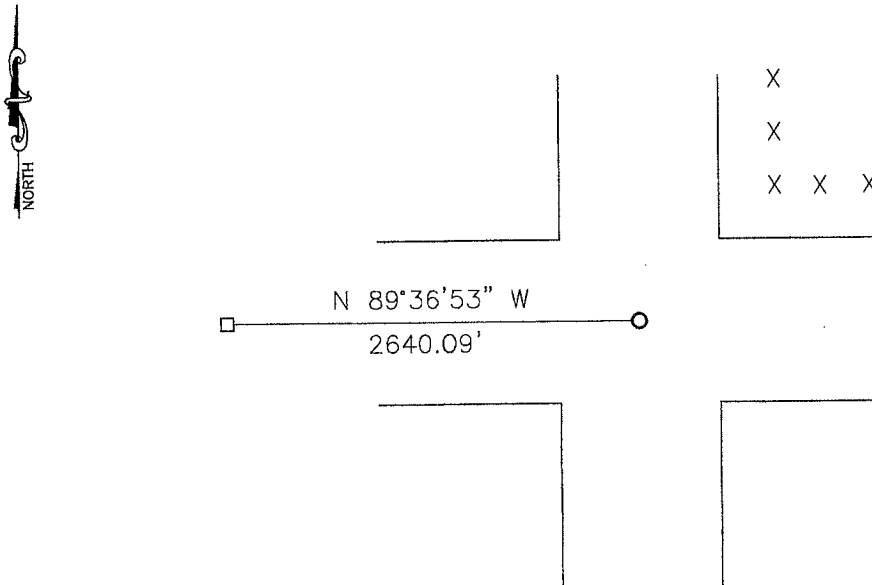
NORTHEAST Corner of Section 33, Township 107, Range 43, 5TH P.M.

STATE OF MINNESOTA, County of MURRAY

At the corner location shown on the sketch:

- On 06-05-2012 found a pointed field stone with a pipe on the north side.
DATE
- left monument as found, lowered monument, removed monument (explain)
- On 06-05-2012 placed a 5/8" iron with seal #43844 over the stone.
DATE

SKETCH OF REFERENCE TIES



Minnesota State Plane Coordinate System Murray County Datum NAD83 (1996)

N: 169006.729
E: 437546.230

Statement of evidence relative to this corner location is on back of page.

I hereby certify that this document and the data contained herein was prepared by me or under my direct supervision.

Sam B... 2/21/13
SIGNATURE DATE

Registration No. 43844

- Land Surveyor, Professional Engineer
- County Surveyor, County Engineer

OFFICE OF THE COUNTY RECORDER

County of

I hereby certify that this document was filed in the Co. Recorders office at _____ .M on the _____ day of MAY 23 2013 A.D. 20 _____

County Recorder *James V. Johnson*
By _____, Deputy

DOCUMENT NO. _____

Statement of Evidence

In 1866, J. W. Bishop did the original subdivision of the township.

On June 5, 2012, Bueltel-Moseng Land Surveying dug with a backhoe and found a pointed field stone with a pipe on the north side. We set a $\frac{5}{8}$ " iron with seal #43844 over the stone.